



**There are many otoscopes  
on the market. But is there  
a better one?**



# A HEINE otoscope's most outstanding feature: durability.

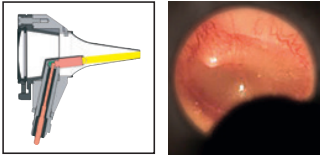
Quality instruments from HEINE are no coincidence. They are the result of continuous research and development work. We started this 75 years ago – and we won't stop now. Every single process in our very own production facilities is carefully thought out. And is being improved all the time. With a single goal: to create products that last as long as you expect them to. Only longer.

**BUY A HEINE OTOSCOPE.  
YOUR CHILDREN WILL ALSO BE DELIGHTED IF THEY BECOME  
A DOCTOR TOO.**

We have heard that loyal HEINE users pass their otoscopes on to the next generation – which is one of the nicest compliments we receive. And, for us, it's proof that our meticulous nature and attention to detail pay off. From the initial idea to the final product.

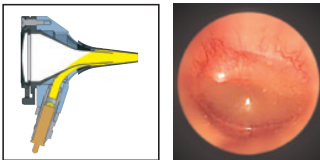
Buy your new otoscope – not just for yourself, but perhaps also for those who will follow in your footsteps.

# Fiber optics (F.O.) is the standard\* at HEINE.



\*HEINE now only offers direct illumination – as shown here – on its lowest-priced mini 3000.

When considering an otoscope purchase, a question that needs to be addressed is how the light gets from the source to the area where it is needed. In the case of direct illumination, the light source is located in the top part of the instrument head and thus in the examiner's field of view.



High-quality fiber optics (F.O.) illumination for even and reflex-free illumination.

In otoscopes with fiber optic technology, the light source can be found in the neck of the otoscope. The light is directed through the bundled glass fibres so as to guarantee an unrestricted view and even, reflex-free illumination.

## Let there be light – with LED<sup>HQ</sup>!

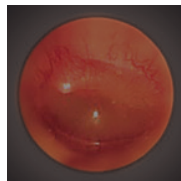
Different types of light sources are used in otoscopes. The most common ones are xenon halogen lamps (XHLs) or light-emitting diodes (LEDs).

While XHL otoscopes are relatively inexpensive to buy, the halogen bulbs repeatedly need replacing. Our LEDs have a virtually unlimited working life. Since there is no need to repeatedly replace the bulbs, a HEINE LED otoscope can pay for itself very quickly.

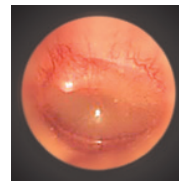
**Illumination:** Every HEINE instrument with LED<sup>HQ</sup> is developed in such a way that it delivers ideal illumination for the application in question. Depending on the application, the instrument is either preset or the light intensity can be continuously adjusted. The result is homogeneous illumination from edge to edge, without distracting reflections, shadows, bright or dark spots.

**Colour rendering:** HEINE LED<sup>HQ</sup> instruments ensure that the user sees the colours as they are during each examination.

**Durability:** Thanks to our special thermal management, LED<sup>HQ</sup> always operates in the ideal temperature range, guaranteeing consistently excellent performance and a virtually unlimited operating life.



Illumination with XHL



LED<sup>HQ</sup> is twice as bright as XHL

## XHL

---

Up to 15 hours usable life

---

Accurate colour rendering

---

Suitable for occasional use

---

Benefit: Inexpensive to purchase

---

## LED<sup>HQ</sup>

---

Between 50,000 and 100,000 hours usable life

---

Excellent colour rendering

---

Suitable for frequent use

---

Benefits: Particularly bright, no need to ever exchange the LED, durable for an extremely long time

---



# All signs are pointing to green.

## RECHARGE INSTEAD OF DISCARD.

Depending on the model, there are different ways of supplying the otoscope with power. And that is entirely based on your needs. Conventional dry cell batteries can be inserted into a battery handle. However, this is not very sustainable since the batteries need to be replaced regularly.

Our USB rechargeable handles use a rechargeable battery that can be charged with a corresponding cable and power supply unit.

The rechargeable handles for our table chargers are even easier and more practical. So your otoscope isn't just safely stored; it is also ready for use at all times.

## A TIP FOR A BETTER FUTURE.



We save tonnes of CO<sub>2</sub> with our featherlight EcoTips. We use plastic from discarded refrigerators. And by recycling these refrigerators in a controlled manner, we save the environment 1,996 tons of CO<sub>2</sub> per year. This corresponds to 62 million kilometres of rail travel per person, which equates to travelling about 1,400 times around the world.



We deliberately chose this type of plastic because CFCs, which are extremely harmful to the climate, are captured when the refrigerators are recycled. This explains the large CO<sub>2</sub> equivalent of almost 2,000 tons per year.

# Your ordering information at a glance.

**BETA 400** F.O. otoscope, 10 AllSpec disposable tips 4 mm Ø with:

BETA battery handle, XHL	<b>B-010.10.118</b>
BETA4 USB rechargeable handle (with USB cord and plug-in power supply), LED	<b>B-010.28.388</b>
BETA4 NT rechargeable handle (with NT4 table charger), LED	<b>B-010.24.420</b>

**BETA 200** F.O. otoscope, 10 AllSpec disposable tips 4 mm Ø with:

BETA battery handle, XHL	<b>B-011.10.118</b>
BETA4 USB rechargeable handle (with USB cord and plug-in power supply), LED	<b>B-011.28.388</b>
BETA4 NT rechargeable handle (with NT4 table charger), LED	<b>B-011.24.420</b>

**mini 3000** F.O. otoscope, 10 AllSpec disposable tips 4 mm Ø with:

mini 3000 battery handle, XHL	<b>D-001.70.110</b>
mini 3000 battery handle, LED	<b>D-008.70.110</b>

## AllSpec disposable tips

Dispenser pack, single, of 250 tips, Ø 2.5 mm	<b>B-000.11.153</b>
Dispenser pack, single, of 250 tips, Ø 4 mm	<b>B-000.11.152</b>

For more information about product variants, accessories and additional instrument heads, visit [www.heine.com](http://www.heine.com)



# HEINE otoscopes come in small or large. And all of them in great.



**mini 3000 LED F.O.**  
**Pocket otoscope**  
**Compact and mobile**

3x magnification

Good level of detail

Good overview

Also as XHL

–

Operation with a recharge-  
able battery or battery

Attachment clip

5-year guarantee

Price category ●○○○○



**BETA 200 LED F.O.**  
**Standard otoscope**  
**Quick overview**

3x magnification

High level of detail

Very quick overview

Also as XHL

Continuous brightness  
control

Operation with a recharge-  
able battery

–

5-year guarantee

Price category ●●●○○



**BETA 400 LED F.O.**  
**High-end otoscope**  
**Very detailed**

4,2x magnification

Very high level of detail

Quick overview

Also as XHL

Continuous brightness  
control

Operation with a recharge-  
able battery

–

5-year guarantee

Price category ●●●●○

# Quality made in Germany.

We live and breathe quality. In everything we do. Every product we make. Every lens we polish. Every screw we tighten. Every optic fiber we bundle. Always. Every day.

The durability of our primary diagnostic instruments is legendary. Every single instrument is the result of decades of product development, continuous improvements, production and a 100 % quality control in our own facilities. We thoroughly ensure that our high expectations of quality are maintained.

It is how we ensure that our high-end products meet our claim of providing the most accurate and earliest possible diagnosis.

No more, no less.

#### HEINE Optotechnik GmbH & Co. KG

Dornierstr. 6, 82205 Gilching, Germany  
[www.heine.com](http://www.heine.com)



We reserve the right to change specification without notice.

03/23. A-000.00.237 e

QUALITY  
MADE IN GERMANY

